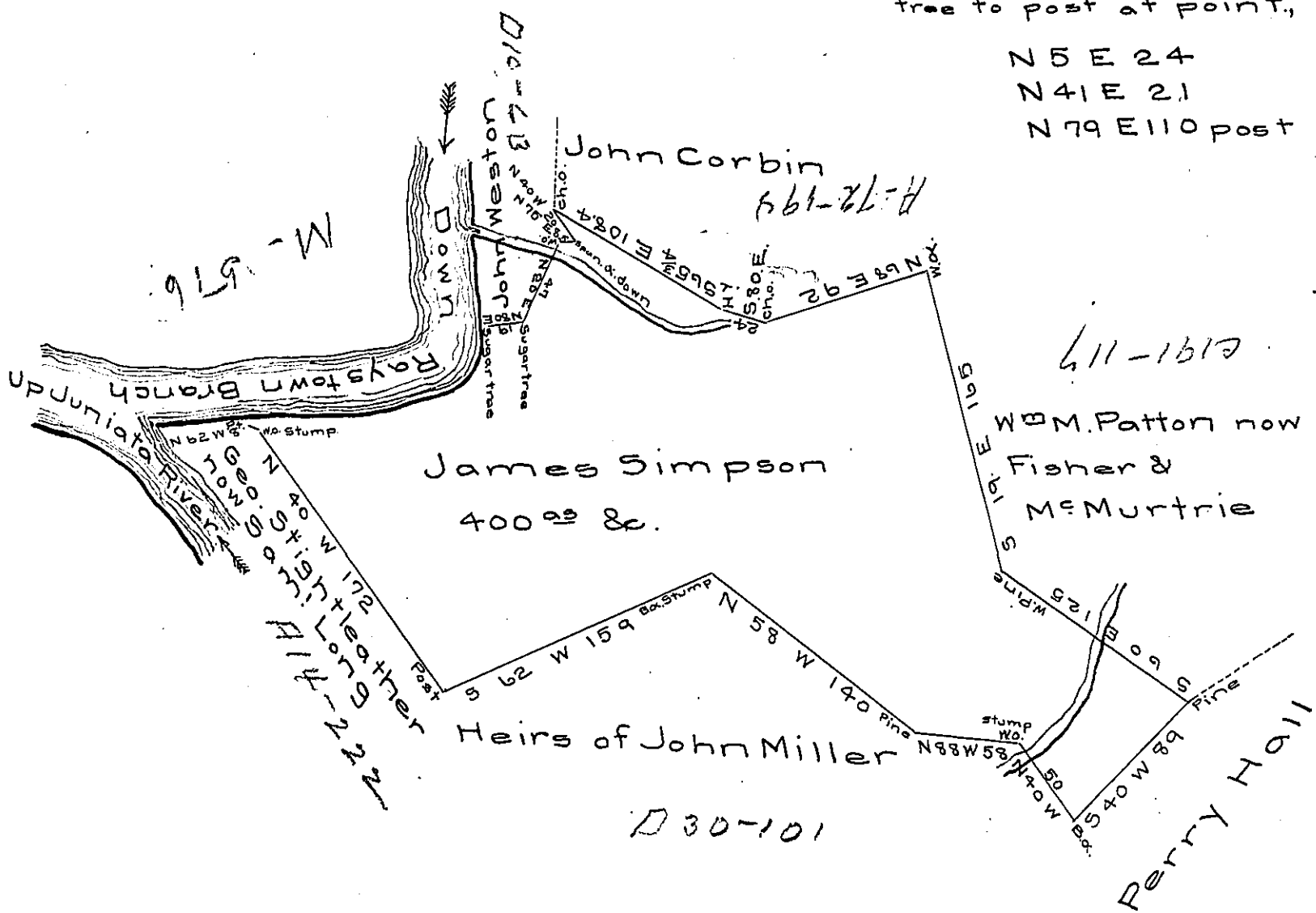


FORM No. 1.

Courses & distances
down the branch from sugar
tree to post at point,

N 5 E 24
N 41 E 21
N 79 E 110 post



Situate in Walker township Huntingdon County containing four hundred acres an and allowance first surveyed March 19th 1812 on warrant to James Simpson for 400^{ac} dated Feb 7th 1812. Resurveyed April 22nd 1839 in pursuance of an Order of Resurvey granted March 3^d 1838.

Jacob Cresswell D.S.

John Taylor Esq.
S.G.

IN TESTIMONY that the above is a copy of the original remaining on file in the Department of Internal Affairs of Pennsylvania, made conformably to an Act of Assembly approved the 16th day of February 1833, I have hereunto set my hand and caused the Seal of said Department to be affixed at Harrisburg, this twenty-eighth day of February 1907.

Geo. R. Brown
Secretary of Internal Affairs.